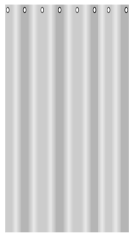


Mount the curtain on the tube

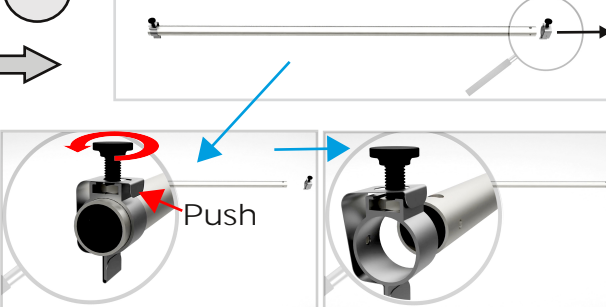
PARTS



Curtain tube

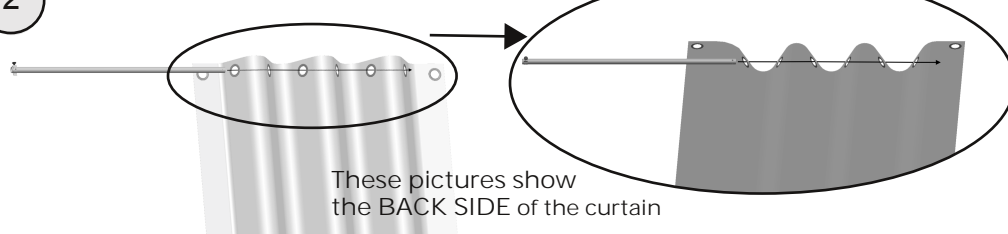
Curtain

1 Prepare the tube by creating an opening for the curtain.



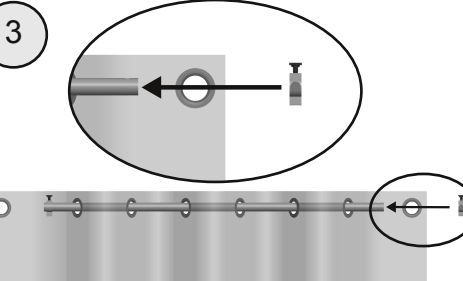
2

All curtains have a FRONT SIDE and a BACK SIDE.



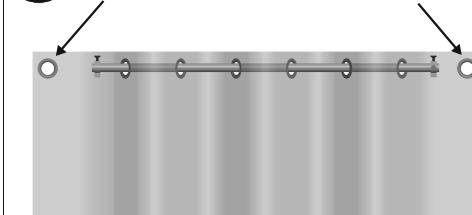
These pictures show the BACK SIDE of the curtain

3



4

First and last ring are not on the curtain tube.

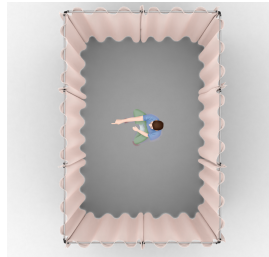


When all the curtains are correctly mounted on the curtain tube AND correctly mounted on the frame and you are IN the room:

- you see only the curtain tubes
- you don't see the frame
- you see the front side of the curtains

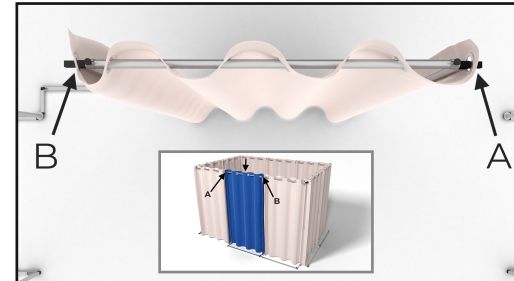
When all the curtains are correctly mounted on the curtain tube AND correctly mounted on the frame and you are standing IN FRONT of the screen:

- you see only the curtain tubes
- you don't see the frame
- you see the front side of the curtains



2

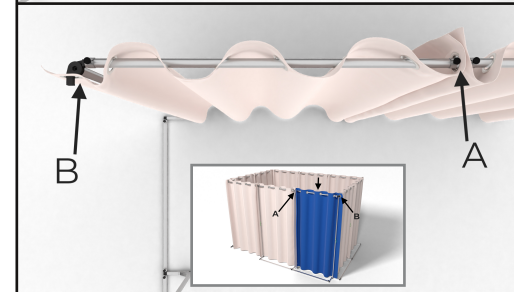
Curtains



Curtain must already be mounted on the curtain tube.

Mount the curtain tube to the frame.

Place the first and last ring on the spots A and B.



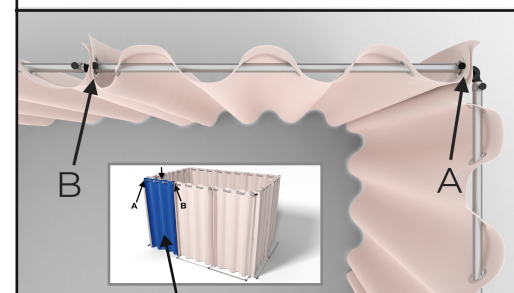
Curtain must already be mounted on the curtain tube.

First place a ring on spot A, against the previous curtain ring and mount the curtain tube to the frame.

Place the last ring on spot B.



Repeat the previous instruction for the next 7 curtains.



Curtain must already be mounted on the curtain tube.

First place a ring on spot A, against the previous curtain ring and mount the curtain tube to the frame on that side.

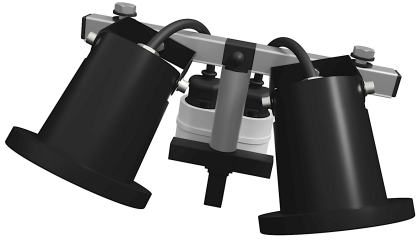
Then place the other ring on spot B, against the previous curtain ring and mount the curtain tube to the frame on that side.

Tip: Start with the curtain you last mounted when breaking down the room.

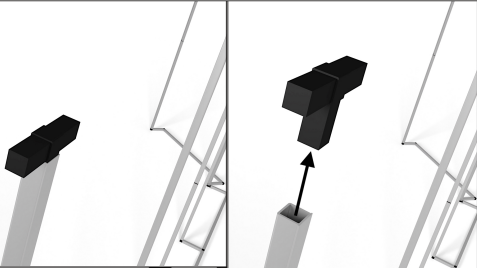
And end with the curtain you first mounted

3

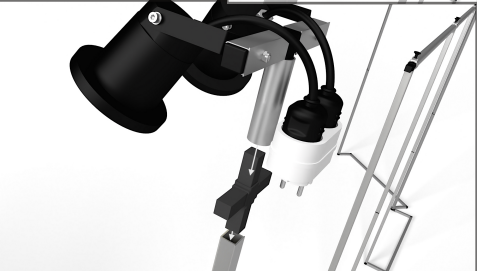
Lights



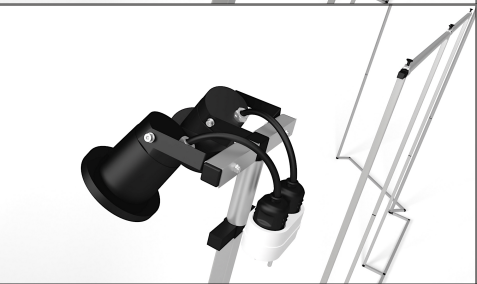
Light equipment for FrameBear



Pull the T part out of the tube.



Push the light equipment....



.....into the tube.



THE LIGHTBEAR

FrameBear

FB-Room 3x2 meters

Check our instruction videos for more tips:

<https://thelightbear.com/support/support-fb-room-3x2-meter/>

