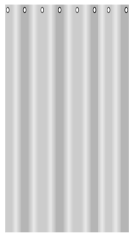


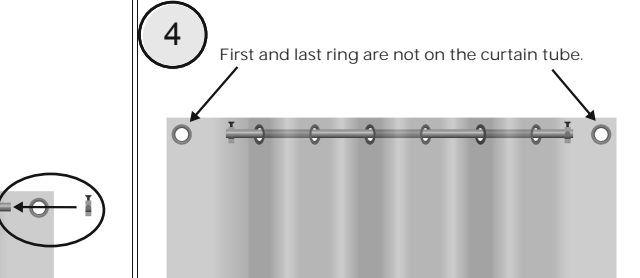
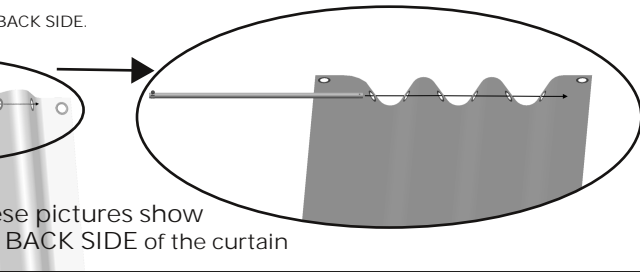
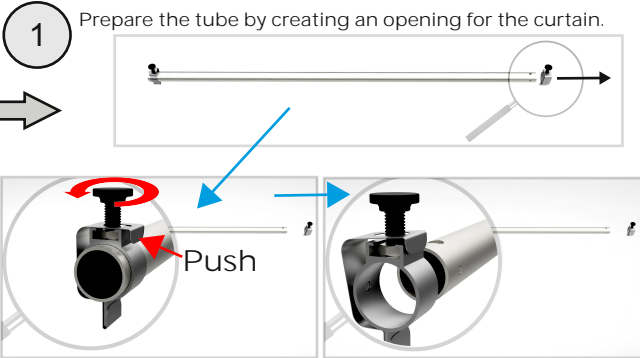
## Mount the curtain on the tube

### PARTS



Curtain tube

Curtain

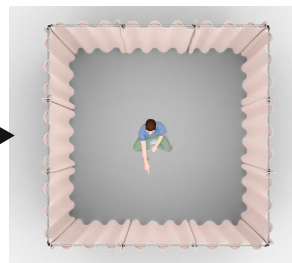


When all the curtains are correctly mounted on the curtain tube AND correctly mounted on the frame and you are IN the room:

- you see only the curtain tubes
- you don't see the frame
- you see the front side of the curtains

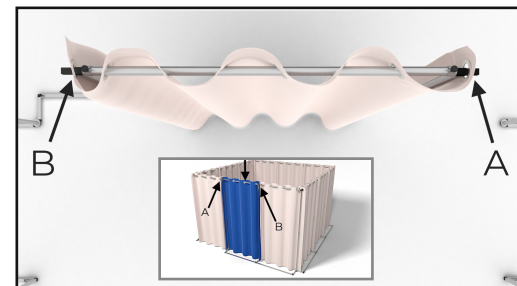
When all the curtains are correctly mounted on the curtain tube AND correctly mounted on the frame and you are standing IN FRONT of the screen:

- you see only the curtain tubes
- you don't see the frame
- you see the front side of the curtains



2

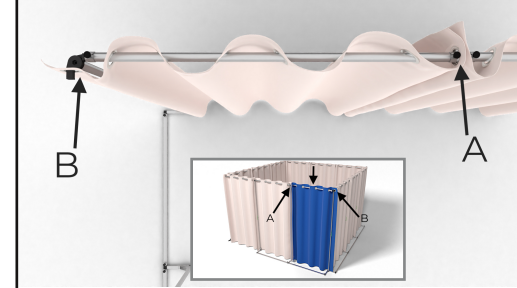
## Curtains



Curtain must already be mounted on the curtain tube.

Mount the curtain tube to the frame.

Place the first and last ring on the spots A and B.



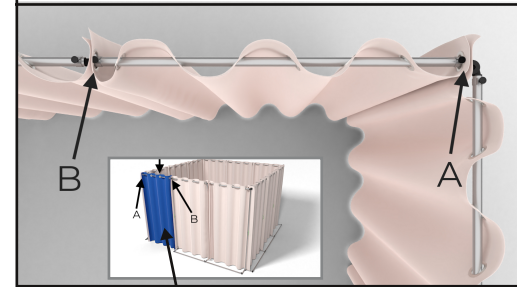
Curtain must already be mounted on the curtain tube.

First place a ring on spot A, against the previous curtain and mount the curtain tube to the frame.

Place the last ring on spot B.



Repeat the previous instruction for the next 9 curtains.



Curtain must already be mounted on the curtain tube.

First place a ring on spot A, against the previous curtain and mount the curtain tube to the frame on that side.

Then place the other ring on spot B, against the previous curtain and mount the curtain tube to the frame on that side.

Tip: Start with the curtain you last mounted when breaking down the room.

And end with the curtain you first mounted

3

